

Assistance for planning aquaculture Development in Thailand

Following the Tsunami in 2005, Akvaplan-niva staff donated 6 months staff time to rehabilitation of aquaculture in the affected areas supported by Norad. One of the projects in Thailand was to assist with training of government staff in conducting environmental monitoring surveys and coastal zone planning for aquaculture using GIS. The project took place Coastal Fisheries Research and Development Center in Krabi.

Technical Assistance

The project work was divided in two parts:

- Training of government staff in conducting environmental monitoring surveys
- Coastal zone planning for aquaculture using GIS

Environmental surveys

A training course was conducted on methods used undertaken for monitoring environmental impacts of aquaculture and ways to reduce impact of aquaculture. The lectures included a detailed analysis of aquaculture impact on the seabed, in the water column in terms of physical, biological and chemical impacts.

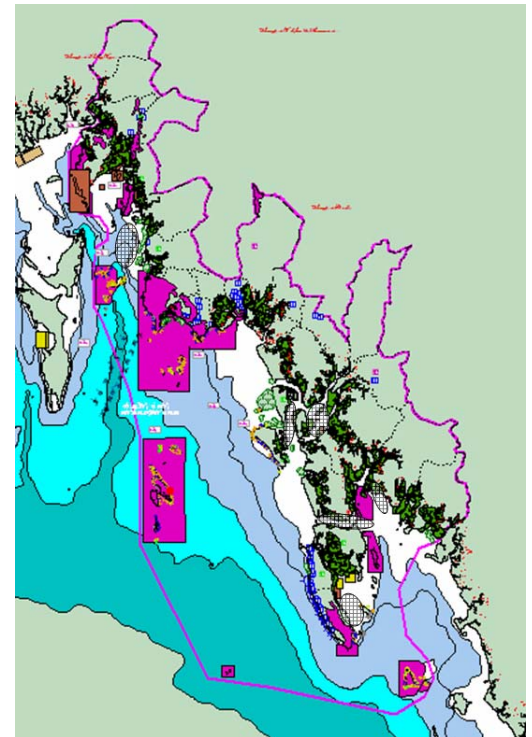
Practical training was given on survey methodology.



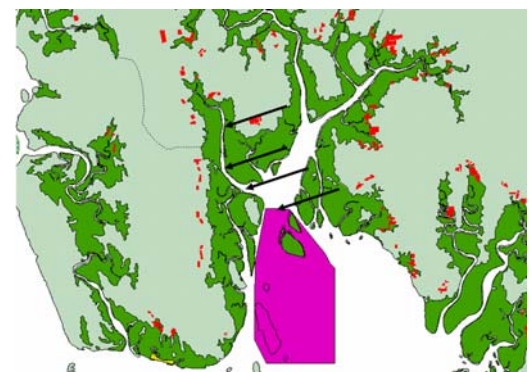
Aquaculture planning

The Krabi Coastal Fisheries Research and Development centre were asked to prepare a coastal zone plan for the Krabi District.

Using GIS, areas unsuitable for aquaculture development were identified (such as heritage areas, tourist developments, environmentally sensitive habitats (mangroves, seagrasses, corals, giant clam areas, etc).



This coupled with climatic data allowed potential area for aquaculture development to be identified.



Akvaplan-niva competence

Akvaplan-niva undertook the following;

- Aquaculture impact
- Environmental monitoring
- Aquaculture planning
- Training and demonstration